

CALIFORNIA
MONTESSORI
PROJECT

DATES TO REMEMBER:

10/17-11/18 KCRA Kids
Can! Canned food drive

10/28– School Closed/
Club M Open

10/27–11/16- Aquama-
rine Pasta Fundraiser

10/31– Continent Party

11/2– 7 Habits Workshop
@ 2:00

11/12– Topaz Portrait
Fundraiser

Montessorigram

OCTOBER 27, 2011

Prop 55, New Campus Site Update

Thank you to all the families that attended the Prop 55 New Campus Site presentation at the CMP Governing Board Meeting on Monday, October 10. The Prop 55 team includes: Gary Bowman, CMP Executive Director; Mickey Slamkowski, Director of Program; Kim Zawilski, Principal of the Shingle Springs Campus; Phil Hendrix, Project Manager; and Jeff Kennedy and Michael Rath, architects from ANOVA/NEXUS. We are continuing to look at the Bradshaw Road/Elk Grove Blvd location, on the southeast side adjacent to Bradshaw Veterinary. There are three parcels of land totaling approximately 10 acres that we are looking to purchase for the school site. We are working closely with the City of Elk Grove, EGUSD, CDE, and a number of other agencies. Our target date to occupy this site is the fall of the 2013-2014 school year.

Along with communicating updates regarding the property in the weekly Montessorigram, the Prop 55 team will be scheduling meeting dates with our Elk Grove families.

This is an exciting time for our staff, students and families as we move forward with the plans for a new campus for the Elk Grove site.

- Mickey Slamkowski, Director of Program

"Be who you are
and say what you
feel because
those who mind
don't matter and
those who mat-
ter don't mind."

-Dr. Seuss

Don't Forget! Friday, October 28th is a non-instructional-day.



Club M will be available to families with a contract or punch card. Be sure you have your permission slips turned in for the Club M field trip on Friday.

Red Ribbon Week



Red Ribbon week ended on a fun note. The teachers faced the young and energetic middle school students in a game of kickball on Friday to "kick out drugs". It was a close game, 7-9, but the winner is still up for debate.

Kids Can! Food Drive

KCRA 3 and Foodlink present the 24th annual 2011 KCRA 3 Kids Can Food Drive to help the hungry in our community. This drive started in 1987 with 24 participating schools, gathering two tons of food. Through the past years, over 480 schools have collected over 3200 tons. This event is the biggest supplier for food closets and pantries in our area and stocks the shelves of food closets and pantries for at least six months. We need your help to serve a significant increase of need throughout the Sacramento area.

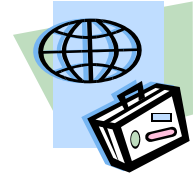
2nd Annual CMP Elk Grove Craft Fair



It's that time of year again. We had such an amazing turnout last year and made over \$900 for the general school fund.

We need your creative support again to make this year's event on November 30th even more successful. Last years goodies included fashion accessories, lots of edible treats, household décor, and ornaments. Both classes and individual families are invited to participate. Be on the lookout for flyers with more information.

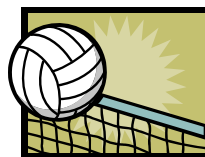
Continent Party



The much loved and anticipated Continent Party is Monday! The students have been studying different features about their continents. Everyone works so

hard to transform their rooms into a whole new time or place. Students will have the opportunity to visit each classroom, possibly try new foods, and learn about new places. If you can volunteer or would like to come travel the world with us, talk with your teacher about the schedule for the day. Don't forget to bring your camera!

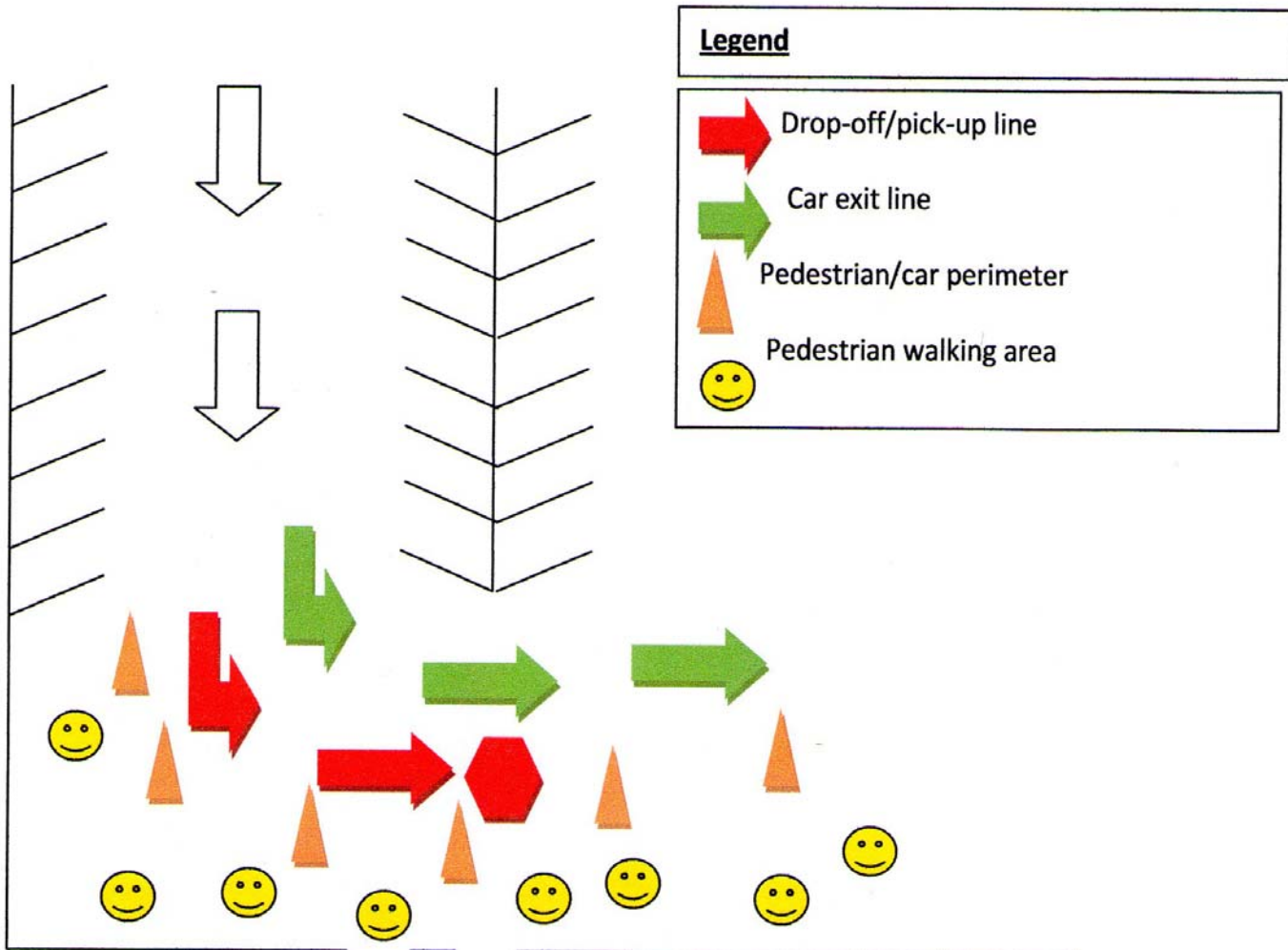
CMP Volleyball



Cool Aces, one of our middle school teams, won their game on Friday. Elk Grove's two other teams played well and will go for

a win November 18th. Scrimmages are scheduled for November 7th and the 14th.

CAR LOOP: Drop-off and Pick-up Procedures



Dear Parents,

In our efforts to identify a consistent drop-off and pick-up procedure, please refer to the above map. We are asking that parents follow the "red" line when dropping off or picking up students, pulling up as closely as possible to the cones. Please have your student(s) exit or enter the vehicle on the right passenger side. The drop-off and pick-up line is not an appropriate place for vehicles to stop and wait. This causes unnecessary back-up in our car loop. If you are just needing to exit the school parking lot, please carefully continue through the loop area. We are further asking that all pedestrians walk behind the "orange" cones. If you have any questions or suggestions, please don't hesitate to contact the school office. Thank you.

It's time to sell some pasta!

The Aquamarine class is hosting the 3rd annual pasta fundraiser. Fun Pasta Fundraising catalogs, order forms, and information are going home today. The fundraiser begins today and all order forms and money are due Wednesday, November 16th. This fundraiser has excellent profit potential and ALL profits go directly into the students' classrooms. Take a look at the catalog and you will see fun, interesting, and delicious pasta, chili, and soup options. Since the pasta doesn't require refrigeration, you can sell to your hearts content. Neighbors, family, and co-workers make great customers and the pasta makes GREAT gifts! Extra order forms are available in the office as well as sample packages to view. The student that has the largest total sales will win a \$25.00 gift card to Toys 'R' Us! We are excited to get the pasta sales rollin'! Orders will be available for pick-up before the winter break.

Morning Car Line



Morning car line can be a tricky place to maneuver. The orange cones create two different lanes. The lane closest to the black gate is for dropping off students only. Please pull all the way up to the gates before letting your child(ren) out of the car. The second lane is only for driving through, no dropping off kids from this lane; we do not want them crossing in front of cars without an adult with them. We appreciate your patience and safety in car line.

It's the Beginning of Cold and Flu Season



It's during this time of year that we see a rise in absences. Although we encourage students to attend school everyday, when students are sick they are less productive and can spread their illness to others. Students with a fever of 100° or higher are required to stay home. They may return to school when they have been symptom free, without medication, for a full 24 hours.

We strongly encourage students to:

- Use hand sanitizer or wash hands often
- Cover your mouth and nose when you cough or sneeze
- Keep your hands away from your eyes and out of your mouth
- Don't share water bottles, food, or other personal items.

Parents are Vital to Every Child's Success!

- Visit your child's classroom-you are welcome
- Make sure that your child gets enough sleep, eats a healthy breakfast everyday before coming to school, has healthy lunch and snacks with them, wears appropriate clothing for the weather, and arrives to school on time.
- Read to your child everyday or encourage your child to read independently

This week in History

Oct 24, 1901

First barrel ride down Niagara Falls

Oct 25, 1881

Pablo Picasso born

Oct 26, 1881

Shootout at the OK Corral

Oct 27, 1904

New York City subway opens

Oct 28, 1965

Gateway Arch completed

Oct 29, 1998

John Glenn returns to space

Oct 30, 1735

John Adams is born

Club M

Club M Activities

This week:

Monday 24	Tuesday 25	Wednesday 26	Thursday 27	Friday 28
Free Choice Monday	Karaoke Party	Fall Quotes Bookmarks	Chapitas	*SEE SIGN-UPS
AM: Free Choice Job	AM: 3 Step	AM: Free Choice Job	AM: 3 Step	AM: Free Choice Fun Fri- day

Next week:

31	1	2	3	4
Free Choice Monday	Freeze Dance	Placemats	3 Step	Movie @3:30
AM: Free Choice Job	AM: 3 Step	AM: Free Choice Job	AM: 3 Step	AM: Free Choice Fun Fri- day

October 28th - We are all set for our fun day tomorrow. Students can bring up to \$3.00 for our stop at Zehnder's on our way to the library. We will also have art workshops to paint pumpkins, make pumpkin paintings, make Tootsie Roll ghosts, and take home finished fuse bead projects.

Punchcard Families - November Calendars are ready for you to fill out. Please take the time to let us know which days your child will attend the program. Club M staff uses this information to make sure we are ready for every child. Thank you for helping us have a successful program.

November Activities Calendar - Be sure to check our calendar on the web or on our bulletin boards by the sign-in and sign-out sheets. This will let you know what your child and staff have been doing to keep things interesting in extended care.