



2011-2012 School Accountability Report Card

CALIFORNIA MONTESSORI PROJECT ELK GROVE CAMPUS

Serving Kindergarten through Eighth Grade

8828 Elk Grove Blvd., Elk Grove, CA 95624

Phone: (916) 714-9699 Fax: (916) 714-9703

Executive Director's Message:



California Montessori Project (CMP) is a public charter school network (K-8) serving over 2000 students on six campuses located throughout the greater Sacramento area. Previously sponsored by Wheatland School District from 2001 through 2006, CMP currently operates under four charters, authorized by Buckeye Union, Elk Grove Unified, Sacramento City Unified and San Juan Unified School Districts. Our campuses are located in Shingle Springs, Elk Grove, Sacramento, Fair Oaks, Orangevale and Carmichael.

The Montessori philosophy states that a child has an innate desire to learn and produce purposeful, meaningful work. Dr. Maria Montessori believed that the role of an adult in a child's education is to provide an appropriate environment, complete with tools and methods, to facilitate the child's own discovery of knowledge and skills at the time when it has the most impact for him/her as an individual. This system has a foundation based on trust and respect of the individual, and a belief that children will soar beyond traditional expectations.

California Montessori Project offers an environment which has the tools, programs, resources, and support to enable students to become educated to high academic standards, and to develop themselves to their fullest capacity as competent, happy, productive individuals, family members, employers/employees, and contributors to a better society and a peaceful world. This is achieved through a strong commitment from the parents, teachers, community groups, legislature and, most importantly, the individual child. CMP is grounded in a philosophy of trust in individuals to seek their greatest potential.

CMP holds that an educated person is well-rounded and balanced. The CMP student shall become a collaborative member of a community, motivated to set and achieve high goals. CMP encourages students to demonstrate empathy towards others through respectful and productive communications. The student is guided to view him/herself as a global citizen who is empowered, and responsible, for making positive changes in the world within the immediate environment. The CMP student develops personal habits leading to a healthy lifestyle which includes balancing leisure, work, family, exercise, nutrition and community.

Principal's Message:



The California Montessori Project, Elk Grove Campus, is a Montessori public charter school offering kindergarten through eighth grade education under a charter authorized by the Elk Grove Unified School District. We

are accredited by the Western Association of Schools and Colleges (WASC) and the American Montessori Society (AMS). Our program quality is sustained by supporting our California credentialed and Montessori trained faculty with continued professional development and quality Montessori materials in low student/teacher ratio classrooms.

We encourage our students to be independent learners and problem solvers. Our students utilize individualized work plans to allow them to work at their own level and pace. Cooperation and positive peer relationships are supported through daily Class Meetings. Respect is strongly emphasized and reinforced on a daily basis: respect for self, respect for others, and respect of our environment.

We have a strong school community with a high level of family involvement. Parents are encouraged to volunteer in the classroom, participate in field trips, and help organize special events and fundraisers. There are many opportunities for our families to be involved as a community and get to know one another. Among such events are the Annual Walk-a-Thon, Science Fair and Pancake Breakfast, Art Walk, Chili Cook-off, Continent Party, Harvest Luncheons, Wax Museum, Ice Cream Socials, and class performances.

California Montessori Project - Central Administration Office
5330A Gibbons Dr. Ste 700, Carmichael, CA 95608
Phone: (916) 971-2432 Fax: (916) 971-2436

2011-2012 School Accountability Report Card

California Montessori Project-Elk Grove Campus

Parent Involvement:

Parents play an active role in the California Montessori Project. Many parents exceed the required 40 hours of participation time, as they assist in the classrooms, chaperone students on fieldtrips, provide additional supervision during morning drop off and afternoon pick-up times, and organize special school events and fundraisers. Parents are also involved in many leadership roles, including service on the Campus Advisory Council, Gardening Committee, Fundraising Committee, and the CMP Governing Board.

For more information on how to become involved, contact Kathleen Merz, Principal at (916) 714-9699.

School Facilities:

The CMP Elk Grove Campus facility is a former public school campus leased through the Cosumnes Community Services District. The facility houses an office, five traditional classrooms and four large portable classrooms. Our Middle School Program resides in classrooms within the Elk Grove Congregational Church complex adjacent to our school grounds. The school grounds include a spacious field, a playground, and a large asphalt play area with a basketball court.

Custodial and maintenance services are provided in the late afternoon and evening through contractual services and parent volunteers.



Public Internet Access:

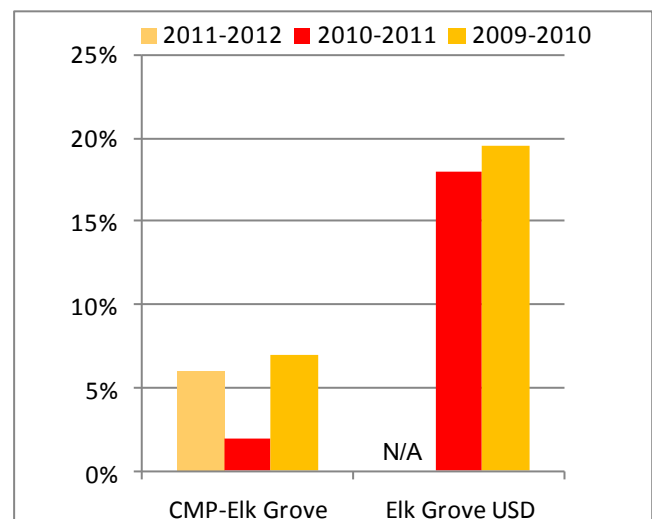
Internet access is available at public libraries and other locations that are publicly accessible (e.g., the California State Library). Access is generally provided on a first-come, first-served basis.

Suspension and Expulsion Data:

Data reflects information for the most recent three-year period. The rate of suspensions and expulsions is calculated by dividing the total number of incidents by the total enrollment. 2011-2012 data not yet available for EGUSD.

"If an educational act is to be efficacious, it will be only that one which tends to help toward the complete unfolding of life."

- Maria Montessori



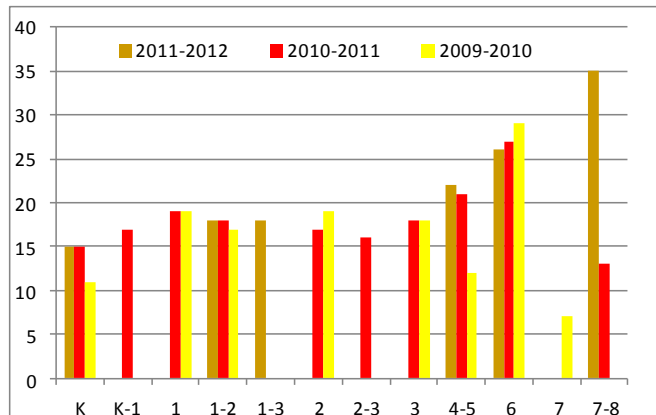
2011-2012 School Accountability Report Card

California Montessori Project-Elk Grove Campus

Class Size Distribution Bar graph displays data over 3 years.

Grade Level	2009-2010				2010-2011				2011-2012			
	Avg. Class Size	# of Classrooms			Avg. Class Size	# of Classrooms			Avg. Class Size	# of Classrooms		
		1-20	21-32	33+		1-20	21-32	33+		1-20	21-32	33+
K	11	4			15	3			22	1	1	
1	19	2			19	1						
K-1	0				17	1						
1-2	17	1			18	1			18	2		
1-3									18	5		
2	19	1			17	1						
2-3	0				16	1						
3	18	2			18	2						
4-5	12	3			21	2	1		22	1	2	
5-6	0				0							
6	29		1		27		1		26		1	
6-7	0				0							
7	7	1			0							
7-8	0				13	2			35	1		

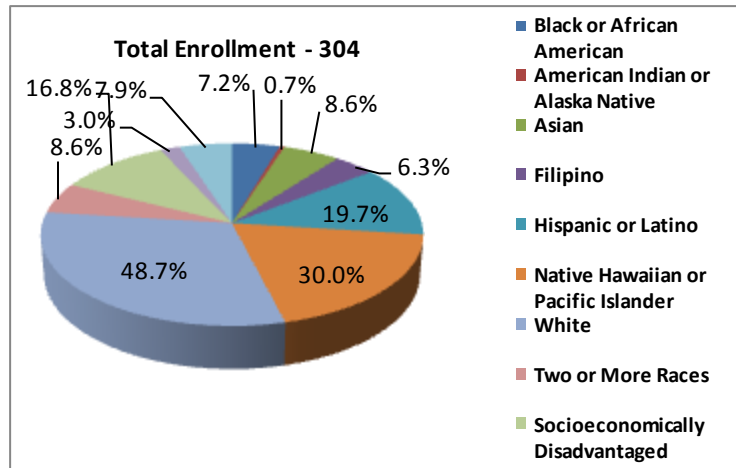
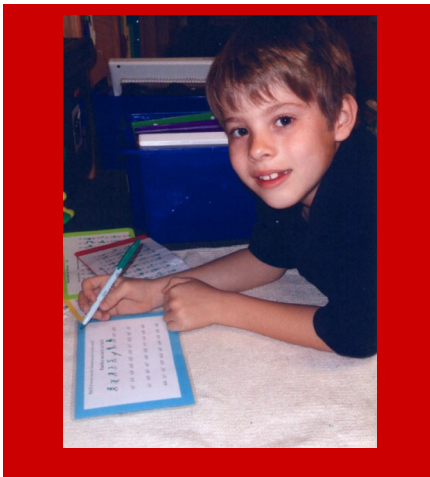
Average Class Size Three-Year Comparison



"To stimulate life, leaving it then free to develop, to unfold, herein lies the first task of the educator. In such a delicate task, a great art must suggest the movement, and limit the intervention, in order that we shall arouse no perturbation, cause no deviation, but rather that we shall help the soul which is coming into the fullness of life and which shall live from its own forces."

-Maria Montessori

Student Enrollment by Group



School Safety Plan:

California Montessori Project has a School Safety Plan and Emergency Preparedness Handbook that are reviewed every year with staff and teachers at each campus.

The CMP school-wide Safety Plan was submitted and approved as part of the 2011 Charter Petition in May 2011. Key elements of the plan include monthly drills and crisis intervention plans.

This plan is reviewed annually and was most recently reviewed, updated, and discussed with school faculty on August 10, 2012.

On what date was the School Safety Plan last reviewed and updated? The Education Code requires that this be done by March 1 each year.

Month

Year

August

2012

Professional Development:

CMP is committed to highly-trained teachers and dedicates significant resources toward ongoing professional development. Each year, CMP reserves five non-instructional service days for focused staff training and professional growth to include such topics as: Response to Intervention, Special Education, Montessori curriculum development, academic planning and other areas of educational specialty. CMP also offers occasional afternoon and weekend workshop opportunities that directly enhance teaching practices in line with the school's mission and vision. CMP offers induction support (BTSA) for newly credentialed teachers as well as tuition assistance for approved outside professional development events and activities.

Finally, CMP provides both tuition assistance and compensation incentives to teachers pursuing cross certification in Montessori education through accredited training centers. This additional level of teacher preparation consists of a rigorous course of study combined with practical classroom experience. In combination with CMP's entire professional development program, we are confident that the result is highly-trained teachers who are ready to lead our students into the 21st century.

Instructional Materials and Textbooks:

CMP Elk Grove curriculum and materials used are aligned with California state standards. The school uses state-adopted textbooks to complement the Montessori materials. During the 2011-2012 school year, no students were lacking textbooks and Instructional materials.

Subject	Gr.	Textbooks and Instructional Materials
English Language Arts	K-3	Primary Phonics, Modern Curriculum Press Great Source Education Press: Working Words in Spelling Albanesi Language Curriculum
English Language Arts	4-8	Great Source Education Press: Working Words in Spelling Prentice Hall: <i>Prentice Hall Literature, Timeless Voices, Timeless, Themes Bronze Level Year A, Silver Level Year B</i> Individual novels for literature studies Wordly Wise Albanesi Language Curriculum
Math	K-3	Albanesi Math Curriculum Otter Creek Institute: Mastering Math Facts, Black Line Masters
Math	4-6	Harcourt Brace: Math Albanesi Math Curriculum Otter Creek Institute: Mastering Math Facts, Black Line Masters
Math	7-8	CGP: <i>California Algebra I</i> CGP: <i>California Mathematics, Course II</i> (Pre-Algebra) Holt McDougal: Geometry
Science	7-8	Prentice Hall: <i>Science Explorer – Cycle A Life Science, Cycle B Physical Science</i>
History-Social Science	4-5	Houghton Mifflin: Oh California Teacher's Curriculum Institute: <i>Social Studies Alive! – America's Past</i>
History-Social Science	6	Teacher's Curriculum Institute: <i>History Alive! – Ancient Civilizations</i>
History-Social Science	7-8	Teacher's Curriculum Institute: <i>History Alive! – Cycle A Medieval World, Cycle B The United States Through Industrialization</i>

Standardized Testing and Reporting

The Standardized Testing and Reporting (STAR) Program consists of several key tests, including the California Standards Test (CST), California Modified Assessment (CMA), and the California Alternate Performance Assessment (CAPA). The CSTs are multiple choice tests in English-Language Arts, Mathematics, Science, and History-Social Science for varying grade levels. Some grade levels also participate in an essay writing test. The CSTs are used to determine students' achievement of the California Academic Content Standards. These standards describe the knowledge and skills that students are expected to learn at each grade level and subject. The CMA is a modified assessment for students with disabilities who have an Individualized Education Plan (IEP). It is designed to assess those students whose disabilities prevent them from achieving grade-level proficiency on an assessment of the content standards with or without accommodations. The CAPA is an alternative assessment for students with significant cognitive disabilities who are unable to take the CST with accommodations or modifications or the CMA with accommodations.

For a complete report of all test results, participation, groups and scores by grade level, visit: <http://star.cde.ca.gov/>



“It is self evident that the possession of and contact with real things bring with them above all, a real quantity of knowledge. Instruction becomes a living thing. Instead of being illustrated, it is brought to life. In a word, the outing is a new key for the intensification of instruction ordinarily given in school.”
 -Maria Montessori

STAR Results for All Students- Three-Year Comparison

In order to compare student achievement to state standards, results are reported as performance levels. Students scoring at the Proficient or Advanced level meet state standards in that content area. The five performance levels are: **Advanced**—exceeds state standards, **Proficient**—meets state standards, **Basic**, **Below Basic** and **Far Below Basic**—students do not meet state standards.

Percent of Students Scoring Proficient or Advanced

	CMP-Elk Grove			Elk Grove U.S.D.			California		
	09-10	10-11	11-12	09-10	10-11	11-12	09-10	10-11	11-12
English Language Arts	61%	66%	62%	68%	57%	60%	54%	54%	56%
Mathematics	49%	64%	45%	72%	53%	54%	59%	50%	51%
Science	69%	53%	53%	63%	60%	63%	53%	56%	60%
History-Social Science	53%	■	40%	■	54%	55%	47%	48%	49%

STAR Test Results By Student Group

The chart below reflects STAR Results in English-Language Arts, Mathematics, Science, and History-Social Science broken down by student group. ■ Scores not shown when 10 or less students are tested.

	English Language Arts	Mathematics	Science	History/ Social Science
All Student in the LEA	60%	54%	63%	55%
All Students at the School	62%	45%	53%	40%
Male	53%	45%	55%	■
Female	70%	44%	52%	■
Economically Disadvantaged	58%	3%	■	■
English Learners	■	■	■	■
Students with Disabilities	29%			■
Receiving Migrant Education Services	■	■	■	■
Two or More Races	40%	40%	■	■
Black or African American	54%	23%	■	■
American Indian/Alaska Native	■	■	■	■
Asian	86%	64%	■	■
Filipino	58%	42%	■	■
Hispanic or Latino	51%	36%	■	■
Native Hawaiian/ Pacific Islander	■	■	■	■
White	68%	49%	50%	31%

Academic Performance Index (API):

The Academic Performance Index (API) is an annual measure of the academic performance and progress of schools in California. The API is a score on a scale of 200-1,000 that reflects a school's, district's or a student group's performance level, based on the results of statewide testing. An API score of 800 is set as the statewide target.

Each annual API reporting cycle includes a Base and a Growth API. The Base API starts the reporting cycle and is released approximately one year after testing. For example, if the testing occurs in the spring of 2010, the Base API is available in the spring of 2012. The growth API is released after the Base API but is calculated from test results from the following year. For example, for testing in the spring of 2011, the Growth API is available in the summer of 2012. Therefore, for the 2011-2012 API reporting cycle, the 2011 Base indicator and the 2012 Growth indicator are used.

To learn more about the API, visit the API information guide at <http://www.cde.ca.gov/ta/ac/ap/>.

API Ranks – A Three-Year Comparison			
	2009	2010	2011
Statewide API Ranks	4	5	6
Similar Schools API Rank	1	1	1

API Testing Note: Data are reported for numerically significant groups only; the group must have at least 50 students with valid test scores who make up 15% of the valid test scores, or have at least 100 students with valid test scores.

Adequate Yearly Progress (AYP):

No Child Left Behind (NCLB) legislation requires that all schools and districts meet Adequate Yearly Progress requirements. To meet these requirements, public schools and districts must meet or exceed criteria in four target areas:

- 1: Participation rate on statewide assessments in English-Language Arts and Mathematics.
- 2: Percentage of students scoring proficient on statewide assessments in English-language arts and mathematics.
- 3: API Scores.
- 4: Graduation rates for high schools.

Adequate Yearly Progress Data				
CMP-Elk Grove			Elk Grove Unified School District	
AYP Criteria	English-Language Arts	Mathematics	English-Language Arts	Mathematics
Met Overall AYP	No	No	No	No
Participation Rate	Yes	Yes	Yes	Yes
Percent Proficient	No	No	No	No
Met API	Yes		Yes	
Graduation Rate	■		No	

■ Not applicable

API Ranks Growth by Student Group – Three Years				API Growth Score
CMP - Elk Grove Campus	2009	2010	2011	2012
Actual API	19	33	-46	782
African American	■	■		■
American Indian or Alaska Native	■	■		■
Asian	■	■		■
Filipino	■	■		■
Hispanic or Latino	■	■		■
Pacific Islander	■	■		■
White	58	29	-54	787
Socio-Economically Disadvantaged	■	■		■
English Learners	■	■		■
Students with Disabilities	■	■		■

California Physical Fitness Test:

The California Physical Fitness Test (PFT) is administered to students in grades five, seven and nine only. The table below displays by grade level the percent of students meeting the fitness standards for the most recent testing period. For detailed information regarding the test, and comparisons of a school's test results to the district and state, see the CDE PFT web page at:

<http://www.cde.ca.gov/ta/tg/pf/>.

The following six key areas are tested:

Aerobic Capacity

Abdominal Strength and Endurance

Body Composition

Upper Body Strength and Endurance

Trunk Extension Strength and Flexibility

Physical Fitness Testing	
Percentage of Students Meeting Standards:	
Grade 5	
Four of Six Standards	20%
Five of Six Standards	32%
Six of Six Standards	28%
Grade 7	
Four of Six Standards	20%
Five of Six Standards	33.3%
Six of Six Standards	26.7%

■ To protect student privacy, scores not shown when the number of students tested is less than 10

**Teacher Qualifications:**

This table shows information about Teacher credentials and qualifications. For further information visit: <http://dq.cde.ca.gov/dataquest/>

Teacher Credential Information				
Teachers	Elk Grove U.S.D	CMP-Elk Grove		
	11-12	09-10	10-11	11-12
With Full Credential	N/A	19	16	17
Teaching Outside Subject Area of Competence	0	0	0	0

Core Academic Classes Taught by Highly Qualified Teachers:

The Federal Elementary and Secondary Education Act (ESEA), also known as No Child Left Behind (NCLB), requires that core academic subjects be taught by Highly Qualified Teachers, defined as having at least a bachelor's degree, an appropriate California teaching credential, and have demonstrated core academic subject area competence. For more information, see the CDE Improving Teacher and Principal Quality Web page at: <http://www.cde.ca.gov/nclb/sr/tq/>

Highly Qualified Teachers		
Percent of Classes in Core Academic Subjects		
	Taught by Highly Qualified Teachers	Not Taught by Highly Qualified Teachers
CMP-Elk Grove Campus	100%	0%
All Schools in District	100%	0%
High-Poverty Schools	.2%	0%
Low Poverty Schools	99.8%	0%

Note: Low-poverty schools are defined as those schools having less than a 25% eligibility rate for the Free and Reduced Meals Program. High-poverty schools are defined as those schools having a greater than 75% eligibility rate for the Free

Teacher misassignments and Vacant Teacher Positions:

Misassignments refers to the number of positions filled by teachers who lack legal authorization to teach that grade level, subject area, student group, etc. Total Teacher misassignments includes the number of misassignments of Teachers of English learners

CMP-Elk Grove School Support Staff	
Teaching Assistants	15
Library Media Services Staff (Paraprofessional)	0
Librarian	0
Nurse	0
Occupational Therapist	1
Psychologist	1
Resource Specialist (non-teaching)	1
Language, Speech and Hearing Specialist	1
Social Worker	0
Other	3

2011-2012 School Accountability Report Card

California Montessori Project-Elk Grove Campus

Federal Intervention Program:

Schools and Districts receiving Title 1 funding can enter Program Improvement (PI) if they fail to meet AYP over two consecutive years in the same content area or on the same API indicator. Each additional year that they do not meet AYP, they advance to the next level of intervention. This table displays the 2011-2012 Program Improvement status for the school and district. For more information please visit www.cde.ca.gov/ta/ac/av/.

■ Not applicable

Program Improvement		
	Elk Grove Campus	Elk Grove Unified School District
Program Improvement Status	Not in PI	In PI
First Year of Program Improvement	■	2009-2010
Year In Program Improvement	■	Year 3
Number of Schools Identified for Program Improvement	12	
Percent of Schools Identified for Program Improvement	18.2%	

Financial Data Comparison:

The tables below show per pupil expenditures from unrestricted funds and the school's average teacher salary. This data is compared to state and district data. Financial data given is obtained from the most current data available provided by the state. This data is always two years behind the current school year, therefore this report card contains data from the 2010-2011 school year. For detailed information, please visit: <http://www.cde.ca.gov/ds/fd/cs> and <http://www.cde.ca.gov/ds/fd/ec>

	Expenditures Per Pupil From Unrestricted Sources	Average Teacher Salary
CMP - Elk Grove	\$6,177	\$41,502
California Montessori Project	\$6,482	\$40,746
California	\$5,455	\$65,598
School and District Percent Difference	-5%	2%
School and California Percent Difference	12%	-37%

School Financial Data:

School Financial Data	
	Elk Grove Campus
Total Expenditures Per Pupil	\$7,340
Expenditures Per Pupil Restricted Sources	\$952
Expenditures Per Pupil Unrestricted Sources	\$6,482
Average Teacher Salary	\$41,502

District Financial Data:

District Salary Data		
Category	Elk Grove Unified School District	Similar Sized District
Beginning Teacher Salary	\$37,109	\$41,455
Mid-Range Teacher Salary	\$55,028	\$66,043
Highest Teacher Salary	\$77,610	\$85,397
Average Principal Salary (Elementary)	\$101,482	\$106,714
Average Principal Salary (High School)	\$113,971	\$121,754
Superintendent Salary	\$243,424	\$223,357
Teacher Salaries Percent of Budget	43%	39%
Administrative Salaries Percent of Budget	4%	5%

Types of Services Funded:

California Montessori Project-Elk Grove receives Federal American Recovery and Reinvestment Act of 2009 (ARRA) funds, Federal Local Assistance funds for Special Education through the Yuba County Office of Education Local Plan Area (YCOE SELPA) and Class Size Reduction (CSR) monies.



“Whoever touches the life of the child,
touches the most sensitive point of a whole
which has roots in the most distant past and
climbs towards the infinite future.”

-Maria Montessori