



**California Department of Education
School Accountability Report Card
California Montessori Project – Capitol Campus
Reported Using Data from the 2016-2017 School Year**

By February 1 of each year, every school in California is required by state law to publish a School Accountability Report Card (SARC). The SARC contains information about the condition and performance of each California public school. Under the Local Control Funding Formula (LCFF) all local educational agencies (LEAs) are required to prepare a Local Control Accountability Plan (LCAP), which describes how they intend to meet annual school-specific goals for all pupils, with specific activities to address state and local priorities. Additionally, data reported in an LCAP is to be consistent with data reported in the SARC.

- For more information about SARC requirements, see the California Department of Education (CDE) SARC Web page at <http://www.cde.ca.gov/ta/ac/sa/>.
- For more information about the LCFF or LCAP, see the CDE LCFF Web page at <http://www.cde.ca.gov/fg/aa/lc/>.
- For additional information about the school, parents/guardians and community members should contact the school principal or the district office.

DataQuest

DataQuest is an online data tool located on the CDE DataQuest Web page at <http://dq.cde.ca.gov/dataquest/> that contains additional information about this school and comparisons of the school to the district, the county, and the state. Specifically, DataQuest is a dynamic system that provides reports for accountability (e.g., test data, enrollment, high school graduates, dropouts, course enrollments, staffing, and data regarding English learners).

About This School

Bernie Evangelista, CMP-Capitol Campus Principal

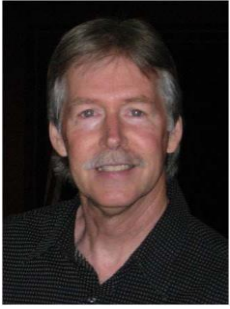


The California Montessori Project - Capitol Campus, is a public charter school offering a high quality, tuition-free, Montessori education to Kindergarten through eighth grade students, under a charter authorized by the Sacramento City Unified School District. CMP is accredited by the American Montessori Society (AMS) and the Western Association of Schools and Colleges (WASC). CMP teachers are highly qualified and possess a California credential and a Montessori certification for the age group they are teaching and in many instances, are also trained in other levels of Montessori education.

As a Montessori school, CMP offers smaller class sizes and CMP students have individual work plans that address specific needs, while providing academic challenges at all grade levels. As a charter school, CMP takes pride in blending California State Standards with Montessori methodology, and is proud of the student achievement, measured, in part, by a high ranking in the California Assessment of Student Performance and Progress.

The CMP-Capitol mascot is the eagle and the motto is "Eagles S.O.A.R." which stands for "Safe, Offer peace, Always respectful and Responsible." Peace education and character education are integral parts of the CMP curriculum. CMP serves a diverse community that brings richness to the academic program. As partners in education, parents are involved in the education of their children. Together, the school and the parents work to educate the children and help them be responsible, respectful, contributing members of the community.

Gary Bowman, CMP Network Superintendent/Executive Director



The current Executive Director/Superintendent of California Montessori Project is Gary S. Bowman, an educator with over 30 years of extensive experience as teacher, administrator, school board member and consultant within the domains of traditional, charter and private schools. Mr. Bowman received his Masters of Science in Education Degree in Curriculum and Instruction from Dominican College of San Rafael, CA, and Administrative Services Credential (Levels One and Two) in association with coursework completed at St. Mary's College (Moraga, CA) and Chico State University.

Mr. Bowman has earned statewide recognition for his work with Native-American students and families, receiving awards at the Governor's Mansion and at the Lawrence Livermore National Lab. He has presented numerous workshops for CSDC (Charter School Development Center), CCSA (California Charter Schools

Association) and AMS (American Montessori Society).

In addition to an extensive teaching career, he has served as a site and/or District administrator in Mendocino, Humboldt and Nevada Counties, as well as Yuba County, where he served as District Superintendent for Camptonville USD. Mr. Bowman was recently elected to serve as a Board Member for the American Montessori Society.

Contact Information (School Year 2017-2018)

California Montessori Project (CMP) is a charter public school network in the greater Sacramento area. CMP-Capitol continues to thrive as part of the CMP network, but also as a unique campus within the Sacramento City Unified School District.

California Montessori Project - Central Administration Office
5330-A Gibbons Drive, Carmichael, CA 95608
Superintendent/Executive Director - Gary Bowman

Authorizing District Contact Information	
District Name	Sacramento City Unified
Phone Number	(916) 643-9000
Superintendent	Jose Banda
E-mailAddress	superintendent@scusd.edu
Web Site	http://www.scusd.edu

Charter School Contact Information	
School Name	California Montessori Project - Capitol Campus
Street	2635 Chestnut Hill Dr.
City, State, Zip	Sacramento, CA, 95826
Phone Number	916-325-0910
Principal	Bernie Evangelista
E-mailAddress	cmpcpoffice@cacmp.org
Web Site	www.cacmp.org
County-District-School (CDS) Code	34674390111757

School Description and Mission Statement (School Year 2016-2017)

The Mission of the California Montessori Project is to offer a quality, tuition-free Montessori Education that challenges our students to reach their full potential

California Montessori Project (CMP) is a public charter school network (K-8) serving over 2500 students on seven campuses located throughout the greater Sacramento area. Previously sponsored by the Wheatland School District from 2001 through 2006, CMP currently operates under four charter authorizers: Buckeye Union, Elk Grove Unified, Sacramento City Unified and San Juan Unified School Districts. CMP campuses are located in Shingle Springs, Elk Grove, Sacramento, Fair Oaks, Orangevale and Carmichael.

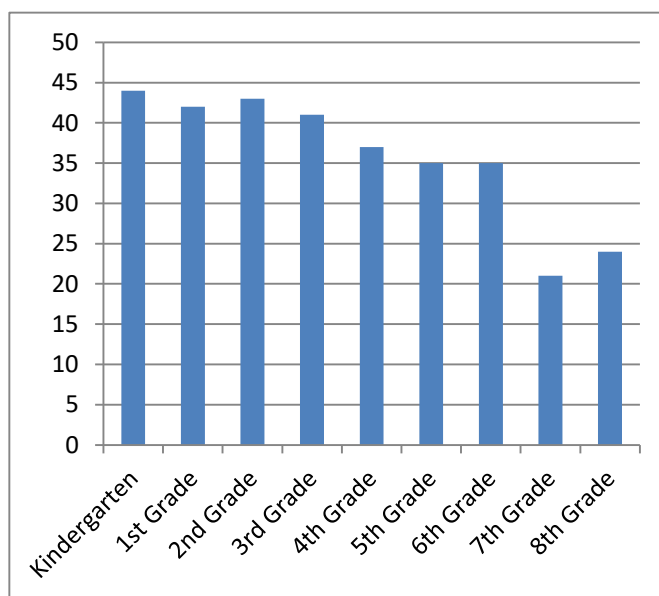
The Montessori philosophy states that a child has an innate desire to learn and produce purposeful, meaningful work. Dr. Maria Montessori believed that the role of an adult in a child's education is to provide an appropriate environment, complete with tools and methods, to facilitate the child's own discovery of knowledge and skills at the time when it has the most impact for him/her as an individual. This system has a foundation based on trust and respect of the individual, and a belief that children will soar beyond traditional expectations.

California Montessori Project offers an environment which has the tools, programs, resources, and support to enable students to become educated to high academic standards, and to develop themselves to their fullest capacity as competent, happy, productive individuals, family members, employers/employees and contributors to a better society and a peaceful world. This is achieved through a strong commitment from the parents, teachers, school leaders, community groups, legislators and, most importantly, the individual child. CMP is grounded in a philosophy of trust in individuals to seek their greatest potential.

CMP holds that an educated person is well-rounded and balanced. The CMP student shall become a collaborative member of a community, motivated to set and achieve high goals. CMP encourages students to demonstrate empathy towards others through respectful and productive communications. The student is guided to view him/herself as a global citizen who is empowered, and responsible, for making positive changes in the world within the immediate environment. The CMP student develops personal habits leading to a healthy lifestyle which includes leisure, work, family, exercise, nutrition and community.

Student Enrollment by Grade Level (School Year 2016-2017)

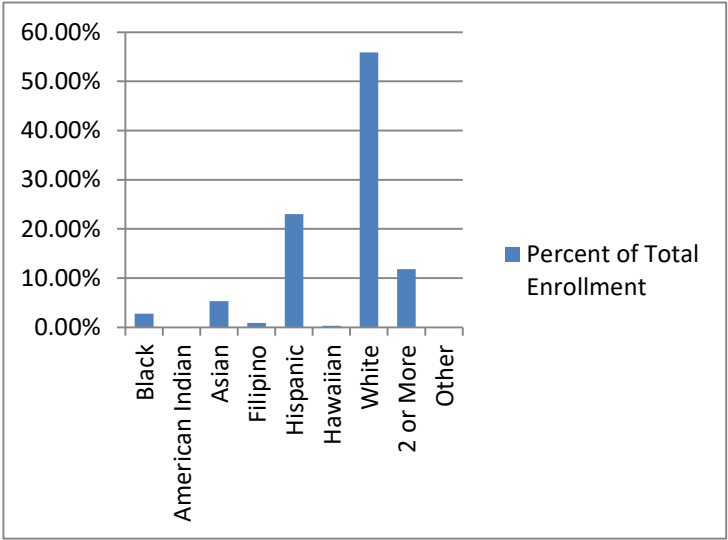
Grade Level	Number of Students
Kindergarten	44
Grade 1	42
Grade 2	43
Grade 3	41
Grade 4	37
Grade 5	35
Grade 6	35
Grade 7	21
Grade 8	24
Total Enrollment	322



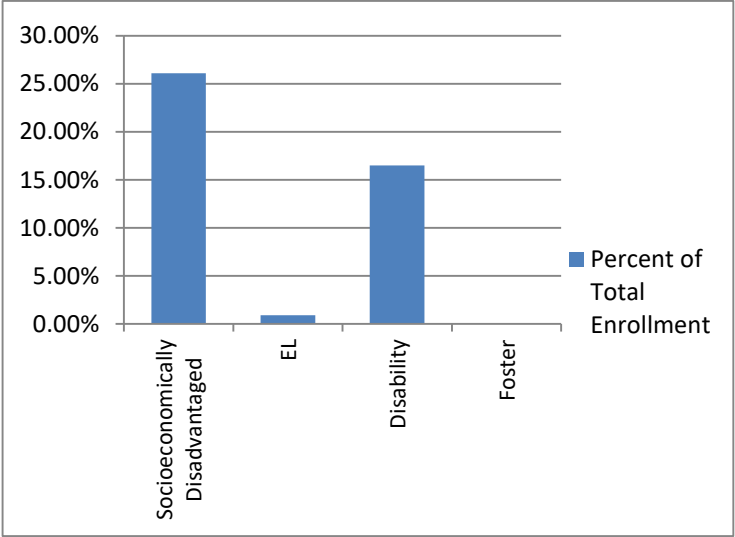
Student Enrollment by Student Group (School Year 2016-2017)

The Student Enrollment Chart reflects student ethnicity groups that are at least 4% of the total student enrollment.

Student Group	Percent of Total Enrollment
Black or African American	2.8 %
American Indian or Alaska Native	0.0 %
Asian	5.3 %
Filipino	0.9 %
Hispanic or Latino	23.0 %
Native Hawaiian or Pacific Islander	0.3 %
White	55.9 %
Two or More Races	11.8 %
Not Reported	0.0 %



Student Group (Other)	Percent of Total Enrollment
Socioeconomically Disadvantaged	26.1 %
English Learners	0.9 %
Students with Disabilities	16.5 %
Foster Youth	0.0 %



A. Conditions of Learning

State Priority: Basic

The SARC provides the following information relevant to the State priority: Basic (Priority 1):

- Degree to which teachers are appropriately assigned and fully credentialed in the subject area and for the pupils they are teaching;
- Pupils have access to standards-aligned instructional materials; and
- School facilities are maintained in good repair

Teacher Credentials

Teachers	CMP-Capitol Campus			SCUSD
	2015-16	2016-17	2017-18	2017-18
With Full Credential	16	16	17	1628
Without Full Credential	0	0	0	79
Teachers Teaching Outside Subject Area of Competence (with full credential)	0	0	0	14

Teacher Misassignments and Vacant Teacher Positions

Indicator	2015-16	2016-17	2017-18
Misassignments of Teachers of English Learners	0	0	0
Total Teacher Misassignments	0	0	0
Vacant Teacher Positions	0	1	0

Note: “Misassignments” refers to the number of positions filled by teachers who lack legal authorization to teach that grade level, subject area, student group, etc.

Total Teacher Misassignments includes the number of Misassignments of Teachers of English learners.

Quality, Currency, Availability of Textbooks and Instructional Materials (School Year 2017-2018)

CMP utilizes the American Montessori Society's recommended materials list when selecting Montessori instructional materials. For all other curricular and supplemental materials and programs, the process is to gather input from a variety of stakeholders to present to the administrative leadership team for determining implementation.

Subject	Textbooks and Instructional Materials/year of Adoption	Percent Students Lacking Own Assigned Copy
Reading/Language Arts	Kindergarten-3rd Grade Montessori Word Building Montessori Albanesi Language Arts Curriculum Primary Phonics Modern Curriculum Press Houghton Mifflin Accelerated Reader 4th Grade-6th Grade Montessori Albanesi Language Arts Curriculum Historic Literature Novels Literature Circles Novels Accelerated Reader 7th Grade-8th Grade Houston Montessori Reproducible Materials Historic Literature Novels Literature Circles Novels Accelerated Reader	0 %
Mathematics	Kindergarten-3rd Grade Montessori Albanesi Math Curriculum Ten Marks 4th Grade-6th Grade Montessori Albanesi Math Curriculum Ten Marks 7th Grade-8th Grade Pearson's Digits for 7 th and 8 th Ten Marks	0 %
Science	4th Grade-5th Grade Montessori Science Curriculum 6th Grade-8th Grade Pearson Prentice Hall, Science Explorer Physical Science Pearson Prentice Hall, Life Science	0 %
History-Social Science	4th Grade Houghton Mifflin, Oh California! 5th Grade-8th Grade Teacher's Curriculum Institute, History Alive!	0 %
Foreign Language	Kindergarten - 8th Grade Rosetta Stone	0 %

School Facility Conditions and Planned Improvements

The Jefferson Campus features a large grassy field with soccer and baseball fields, a blacktop area with tetherball and basketball courts, a playground structure, garden boxes, numerous bathrooms, a library, multi-purpose/lunchroom room with stage, 14 classrooms, Resource Room and staff room.

The Jefferson facility, currently leased through June 2021, allows for expansion due to student growth. The school was built in 1963 and a Plant Manager and part time Custodian maintain the facility from 6:00 a.m. to 6:00 p.m. Our sponsoring district, SCUSD, takes care of the maintenance needs of the campus.

B. Pupil Outcomes

State Priority: Pupil Achievement

The SARC provides the following information relevant to the State priority: Pupil Achievement (Priority 4):

- **Statewide assessments** (i.e., California Assessment of Student Performance and Progress (CAASPP) System, which includes

Subject	Percent of Students Meeting or Exceeding the State Standards					
	School		District		State	
	2015-16	2016-17	2015-16	2016-17	2015-16	2016-17
English Language Arts / Literacy (grades 3-8 and 11)	58%	51%	39%	39%	48%	48%
Mathematics (grades 3-8 and 11)	34%	28%	30%	31%	36%	37%

the Smarter Balanced Summative Assessments for students in the general education population and the California Alternate Assessments (CAAs) for English language arts/literacy (ELA) and mathematics given in grades three through eight. Only eligible students may participate in the administration of the CAAs. CAAs items are aligned with alternate achievement standards, which are linked with the Common Core State Standards (CCSS) for students with the most significant cognitive disabilities).

CAASPP Test Results in English Language Arts/Literacy (ELA) and Mathematics for All Students

Note: Percentages are not calculated when the number of students tested is ten or less, either because the number of students in this category is too small for statistical accuracy or to protect student privacy.

CAASPP Test Results in English Language Arts/Literacy (ELA) by Student Group Grades Three through Eight (School Year 2016-17)

Student Group	Total Enrollment	Number Tested	Percent Tested	Percent Met or Exceeded
All Students	192	192	100.0%	51.0%
Male	100	100	100.0%	46.0%
Female	92	92	100.0%	56.5%
Black or African American	--	--	--	--
American Indian or Alaska Native	--	--	--	--
Asian	--	--	--	--
Filipino	--	--	--	--
Hispanic or Latino	51	51	100.0%	31.4%
Native Hawaiian or Pacific Islander	--	--	--	--
White	106	106	100.0%	59.4%
Two or More Races	17	17	100.0%	58.8%
Socioeconomically Disadvantaged	48	48	100.0%	20.8%
English Learners	--	--	--	--
Students with Disabilities	47	47	100.0%	23.4%

Students Receiving Migrant Education Services	--	--	--	--
Foster Youth	--	--	--	--

Note: ELA test results include the Smarter Balanced Summative Assessment and the CAA. The “Percent Met or Exceeded” is calculated by taking the total number of students who met or exceeded the standard on the Smarter Balanced Summative Assessment plus the total number of students who met the standard (i.e., achieved Level 3–Alternate) on the CAAs divided by the total number of students who participated in both assessments.

Note: Double dashes (--) appear in the table when the number of students is ten or less, either because the number of students in this category is too small for statistical accuracy or to protect student privacy.

Note: The number of students tested includes all students who participated in the test whether they received a score or not; however, the number of students tested is not the number that was used to calculate the achievement level percentages. The achievement level percentages are calculated using only students who received scores.

CAASPP Test Results in Mathematics by Student Group

Grades Three through Eight (School Year 2016-17)

Student Group	Total Enrollment	Number Tested	Percent Tested	Percent Met or Exceeded
All Students	192	192	100.0%	27.6%
Male	100	100	100.0%	26.0%
Female	92	92	100.0%	29.4%
Black or African American	--	--	--	
American Indian or Alaska Native				
Asian	--	--	--	
Filipino	--	--	--	
Hispanic or Latino	51	51	100.0%	11.8%
Native Hawaiian or Pacific Islander	--	--	--	
White	106	106	100.0%	32.1%
Two or More Races	17	17	100.0%	47.1%
Socioeconomically Disadvantaged	48	48	100.0%	--
English Learners	--	--	--	
Students with Disabilities	47	47	100.0%	12.8%
Students Receiving Migrant Education Services				
Foster Youth				

Note: ELA test results include the Smarter Balanced Summative Assessment and the CAA. The “Percent Met or Exceeded” is calculated by taking the total number of students who met or exceeded the standard on the Smarter Balanced Summative Assessment plus the total number of students who met the standard (i.e., achieved Level 3–Alternate) on the CAAs divided by the total number of students who participated in both assessments.

Note: Double dashes (--) appear in the table when the number of students is ten or less, either because the number of students in this category is too small for statistical accuracy or to protect student privacy.

Note: The number of students tested includes all students who participated in the test whether they received a score or not; however, the number of students tested is not the number that was used to calculate the achievement level percentages. The achievement level percentages are calculated using only students who received scores.

CAASPP Test Results in Science for All Students

Grades 5 and 8

Subject	Percentage of Students Scoring at Proficient or Advanced					
	School		District		State	
	2014-15	2015-16	2014-15	2015-16	2014-15	2015-16
Science (grades 5 and 8)	68%	63%	47%	60%	56%	54%

Note: Science test results include California Standards Tests (CSTs), California Modified Assessment (CMA), and California Alternate Performance Assessment (CAPA) in grades five and eight.

Note: The 2016-17 data are not available. The California Department of Education is developing a new science assessment based on the Next Generation Science Standards for California Public Schools (CA NGSS). The new California Science Test (CAST) was piloted in spring 2017. The CST and CMA for Science will no longer be administered.

State Priority: Other Pupil Outcomes

The SARC provides the following information relevant to the State priority: Other Pupil Outcomes (Priority 8):

- Pupil outcomes in the subject area of physical education

California Physical Fitness Test Results (School Year 2016-17)

Grade Level	Percentage of Students Meeting Fitness Standards		
	Four of Six Standards	Five of Six Standards	Six of Six Standards
5	22.9%	25.7%	31.4%
7	14.3%	38.1%	23.8%

C. Engagement

State Priority: Parental Involvement

The SARC provides the following information relevant to the State priority: Parental Involvement (Priority 3):

- Efforts made to seek parent input in making decisions for the school.

Opportunities for Parental Involvement (School Year 2016-2017)

Parent participation is an essential component of our program. In the classroom, parents' assistance is provided by reading with students, helping in computer work, making materials, and many other ways. Serving as parent chaperones and drivers on field trips are two of the most important ways parents support the school, as it allows for the opportunities for learning outside of the classroom. Help during fundraising events, such as the Harvest Festival, Silent Auction, Book Fairs, Art/Wine and Cheese, is a fun way to participate in the program. For those who have time constraints during the school day, parents can also take work home. Making materials, washing rugs and placemats, and labeling library books are some ways work from home are done.

Parents are also involved in many leadership roles, including service on the Campus Advisory Council and the CMP Governing Board. Serving on one of the school committees is another way of being involved: Room Parent Committee, Fundraising Committee, Facilities and Safety Committee, Enrichment Committee, Stewardship Committee and Art Committee.

State Priority: School Climate

The SARC provides the following information relevant to the State priority: School Climate (Priority 6):

- Pupil suspension rates;
- Pupil expulsion rates; and
- Other local measures on the sense of safety

Suspensions and Expulsions

Rate	School			District			State		
	2014-15	2015-16	2016-17	2014-15	2015-16	2016-17	2014-15	2015-16	2016-17
Suspensions	4.1%	3.0%	2.5%	6.1%	5.8%	6.3%	3.8%	3.7%	3.7%
Expulsions	0.0%	0.0%	0.0%	0.0%	0.0%	0.0%	0.1%	0.1%	0.1%

School Safety Plan

California Montessori Project has a Site Safety Operations Plan that includes a Comprehensive Safety Plan and a Site Emergency Response Plan. The Site Safety Operation Plan is reviewed every year with the site safety committee at each campus and approved by the CMP Governing Board annually.

The CMP school-wide Safety Plan was submitted and approved as part of the Charter Renewal in February 2014. Key elements of the plan include monthly drills and crisis intervention plans.

D. Other SARC Information

The information in this section is required to be in the SARC but is not included in the state priorities for LCFF.

Federal Intervention Program (School Year 2017-2018)

Indicator	CMP-CAP	SCUSD
Program Improvement Status	Not in PI	In PI
First Year of Program Improvement	N/A	2008-2009

Year in Program Improvement	N/A	Year 3
Number of Schools Currently in Program Improvement	N/A	52
Percent of Schools Currently in Program Improvement	N/A	73.2%

Note: Cells with N/A values do not require data.

Average Class Size and Class Size Distribution (Elementary)

In the Montessori methodology, classrooms are structured into multi-age groupings. Multi-age spans in classrooms are based on the philosophy of the family unit. Just like in a family environment where younger members learn from the experience of the older ones, children in a multi-age group setting learn from each other. Children develop the skills to negotiate, cooperate, and accept ideas other than their own. Since all children are at different stages in their learning and development, negative competition between children is practically non-existent. Younger students benefit by having mentors and role models, and learning from peers as well as adults. The older, more advanced student gains confidence and leadership skills. By mentoring the younger peer, the older student reinforces his/her own academic knowledge. CMP continues to maintain a low student/teacher ratio by keeping small class sizes. Instructional assistants, Montessori specialists, parent volunteers, and other program specialists further reduce the student-to-adult ratio.

	2014-2015				2015-2016				2016-2017			
Subject	Average Class Size	Number of Classes *			Average Class Size	Number of Classes *			Average Class Size	Number of Classes *		
		1-20	21-32	33+		1-20	21-32	33+		1-20	21-32	33+
K	22	0	2	0	22	0	2	0	22	0	2	0
1 st , 2 nd , 3 rd	22	0	6	0	22	1	5	0	21	2	4	0
4 th , 5 th	0	0	0	0	n/a	n/a	n/a	n/a	16	1	0	0
5 th , 6 th									16	2	0	0
4 th , 5 th , 6 th	19	4	2	0	18	4	2	0	20	3	0	0

* Number of classes indicates how many classes fall into each size category (a range of total students per class).

Average Class Size and Class Size Distribution (Secondary)

One of the goals of the California Montessori Project is for all Teachers to have both their Montessori and California teaching credentials. When a Teacher has only one of these credentials, he/she will enroll in an approved program to obtain the other. In many situations, a co-Teacher and/or Teaching Assistant is also teaching in the classroom. CMP Teaching Assistants have knowledge and/or background in early childhood education as well as previous successful experience working with children. These staff positions are supervised by the Lead Teacher.

	2014-2015				2015-2016				2016-2017			
Subject	Average Class Size**	Number of Classes *			Average Class Size**	Number of Classes *			Average Class Size**	Number of Classes *		
		1-22	23-32	33+		1-22	1-22	33+		1-22	23-32	33+
English	41	0	0	1	20	1	1	0	23	1	1	0
Mathematics	14	3	0	0	15	3	0	0	11	4	0	0
Science	41	0	0	1	20	1	1	0	23	1	1	0
Social Science	41	0	0	1	20	1	1	0	23	1	1	0

* Number of classes indicates how many classrooms fall into each size category (a range of total students per classroom). At the secondary level, this information is reported by subject area rather than grade level.

*The Average Class Size reflects the number of students per lead teacher in the classroom. At CMP-Capitol, the students were also served by a second Credentialed Teacher in each class.

Academic Counselors and Other Support Staff (School Year 2016-2017)

Number of FTE* Assigned to School	
Counselor (Social/Behavioral or Career Development)	0.0
Library Media Teacher (librarian)	0.0
Library Media Services Staff (paraprofessional)	0.0
Psychologist	1.0
Social Worker	0.0
Nurse	0.0
Speech/Language/Hearing Specialist	0.0
Resource Specialist (non-teaching)	0.0
Other	1.0
Average Number of Students per Staff Member	
Academic Counselor	n/a

*One Full Time Equivalent (FTE) equals one staff member working full time; one FTE could also represent two staff members who each work 50 percent of full time.

Expenditures per Pupil and Charter School Teacher Salaries (Fiscal Year 2015-2016)

Level	Total Expenditures Per Pupil	Expenditures Per Pupil (Supplemental/Restricted)	Expenditures Per Pupil (Basic/Unrestricted)	Average Teacher Salary
CMP – Capitol	\$9,511	\$2,072	\$7,439	\$46,709
SCUSD	N/A	N/A	\$5,013	\$74,317
Percent Difference – CMP-Capitol and SCUSD	N/A	N/A	48%	-37%
State	N/A	N/A	\$6,574	\$74,194
Percent Difference – CMP-Capitol and State	N/A	N/A	13%	-37%

Types of Services Funded (Fiscal Year 2016-2017)

California Montessori Project-Capitol received Federal American Recovery and Reinvestment Act of 2009 (ARRA) funds, Federal Local Assistance funds for Special Education through the Yuba County Office of Education Local Plan Area (YCOE SELPA) and Class Size Reduction (CSR) monies.

Professional Development

CMP is committed to highly trained teachers and dedicates significant resources toward ongoing professional development. Each year, CMP reserves several non-instructional service days for focused staff training and professional growth to include such topics as: Response to Intervention, Special Education, Montessori curriculum development, academic planning and other areas of educational specialty. CMP also offers twice monthly Early Release/Professional Development opportunities that directly enhance teaching practices in line with the school's mission and vision. CMP offers teacher induction support for newly credentialed teachers as well as tuition assistance for approved outside professional development events and activities.

Finally, CMP provides both tuition assistance and compensation incentives to teachers pursuing cross certification in Montessori education through accredited training centers. This additional level of teacher preparation consists of a rigorous course of study combined with practical classroom experience. In combination with CMP's entire professional development program, we are confident that the result is highly-trained teachers who are ready to lead our students into the 21st century.