



American River Campus Parent Information Tour

2022-2023 School Year

Introduction

❑ Kathleen Merz

- ❑ Principal of the American River Campus
- ❑ Has been with CMP since its inception (2001)
- ❑ Originally worked at the Elk Grove Campus
 - ❑ 6-9 Lead Teacher
 - ❑ Education Specialist (Vice Principal)
 - ❑ Principal
- ❑ Parent of CMP alum

❑ Melissa Goude

- ❑ Dean of Students of the American River Campus (Vice Principal)
- ❑ Has been with CMP since 2012
- ❑ American River Campus
 - ❑ 6-9 Lead Teacher
- ❑ Originally from the Elk Grove Campus
 - ❑ 6-9 Teaching Assistant
 - ❑ 6-9 Lead Teacher
 - ❑ Kindergarten Lead Teacher

Purpose of this Information Tour

- ❑ To help you decide if this is the right program for your child and family.
- ❑ Montessori is a unique program
- ❑ Tours are encouraged at each campus
 - ❑ Campus sites are unique
 - ❑ Physical layout of the campus
 - ❑ Size
 - ❑ Dress code
 - ❑ Lunch/breakfast programs
 - ❑ Sports for older students
 - ❑ After school enrichment offerings

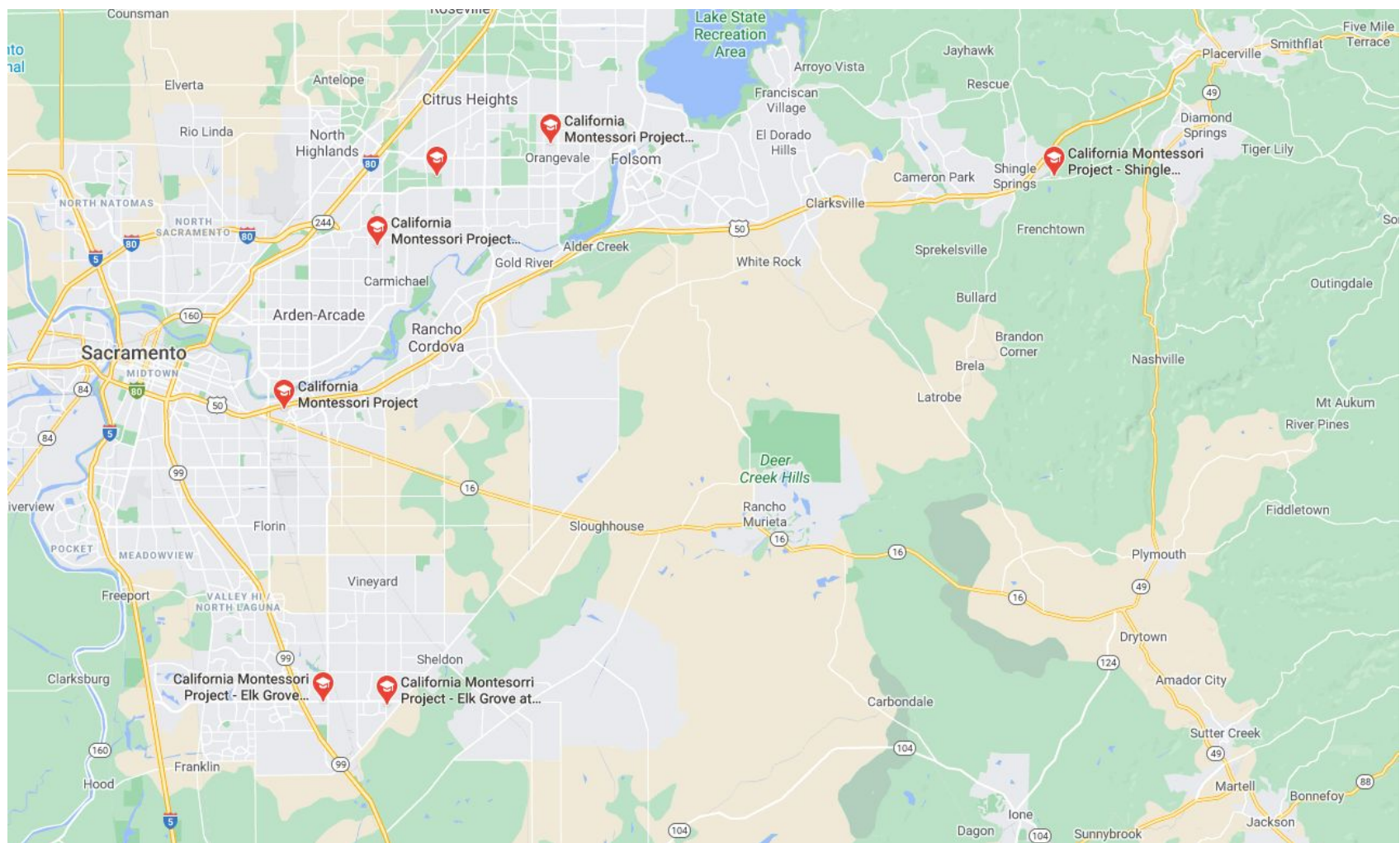
History of CMP

- ❑ Founded in 2001 –
 - ❑ 2 Charter School Experts – Keith Alpaugh and Marian McGillivray
 - ❑ 2 Montessori School Owners – Deanna Gardner and Norman Lorenz
- ❑ At that time CMP opened four schools in Sacramento and El Dorado Counties
 - ❑ CMP-Capitol
 - ❑ CMP-Carmichael
 - ❑ CMP-Elk Grove Campus (Norman's original school)
 - ❑ CMP-Shingle Springs (Deanna's original school)
- ❑ In 2002, CMP opened the American River Campus

About CMP

- ❑ CMP is a network of **Independent** Charter Schools
 - ❑ Six campuses (7 sites) authorized by four school districts
 - ❑ Authorized by Sac City Unified School District - CMP-Capitol Campus
 - ❑ Authorized by Elk Grove Unified School District - CMP-Elk Grove Campus (two sites separated by 2.2 miles)
 - ❑ Authorized by San Juan Unified School District - CMP-American River Campus, CMP-Carmichael Campus, and the CMP-Orangevale Campus
 - ❑ Authorized by Buckeye Elementary School District - CMP-Shingle Springs Campus
 - Allows alternate teaching methods. (Montessori Philosophy & Curriculum) while addressing CA State Standards (CCSS)
- ❑ Oversight by Governing Board: Comprised of parents, teachers, and community members
 - ❑ Brett Barley is CMP's Superintendent
- ❑ Funded directly by the state through tax dollars
- ❑ Is a public school

Free, Public, Charter Montessori School



Accreditations



Accredited by
**Western
Association of
Schools and Colleges**



AMERICAN MONTESSORI SOCIETY
education that transforms lives

Montessori Philosophy



Maria Montessori, was born in Italy in 1870. She was a bright student, studied engineering when she was 13, and against her father's wishes entered a technical school. At that time, only boys attended technical school. She later decided to pursue medicine. After receiving approval from the Pope to attend medical school, she became the first woman in Italy to earn a medical degree.

As a doctor, she worked with children with special needs, and through her work with them she became increasingly interested in education. She believed that children were not blank slates, but that they each had inherent, individual gifts. She emphasized independence, self-directed learning, and learning from peers. Children were encouraged to make decisions. Teachers are facilitators in the classroom.

Since the early 1900's, Dr. Montessori's philosophy, materials, and practices have spread around the globe and have been implemented in a multitude of cultural settings. Dr. Montessori died in 1952 at the age of 81. She wrote many books about her philosophy of education, including the Montessori Method (1912) and is considered a major innovator in educational theory and practice. There are now thousands of certified, private Montessori schools and over several hundred public Montessori schools in the United States.

Transitioning to a Montessori Environment

- ❑ If your child is used to a traditional classroom format, in which all of the students are working on the same activity at the same time as one teacher leads them, please be aware that in a Montessori classroom there is a different format.
- ❑ In Montessori classrooms, students' skills are assessed, then they are given lessons and assignments based on their academic needs.
- ❑ Most mornings, students will have 2-3 hours to complete their daily assignments. Teachers give lessons on new concepts and they, along with the Teaching Assistant, are there to support students, but students are responsible for be on-task and completing their individual work independently.

❑

**The Mission of the
California Montessori Project
is to offer a quality, tuition-free
Montessori education
that challenges our students
to reach their full potential.**

American River Bell Schedule

Grade Level	Start Time	Dismissal	ERD Dismissal
TK/K	8:30 am	2:00 pm	1:00 pm
1/2/3	8:30 am	3:00 pm	1:00 pm
4/5/6	8:30 am	3:00 pm	1:00 pm
7/8	8:15 am	3:00 pm	1:00 pm

CMP-AR has a lunch program sponsored through the SJUSD. The children in TK-6th grade have a 30 minute lunch time and a 30 minute recess. The Middle School Students have a 45 minute combined lunch and recess.

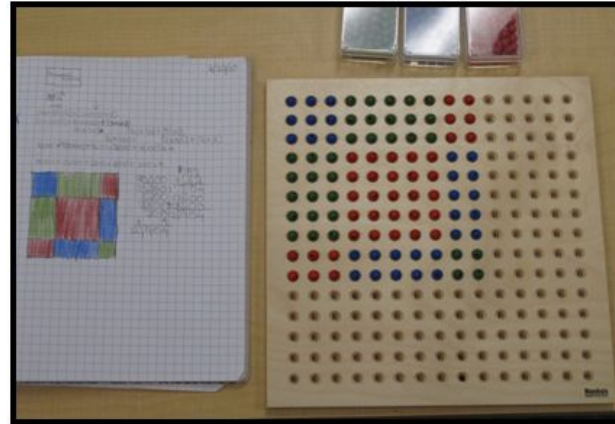
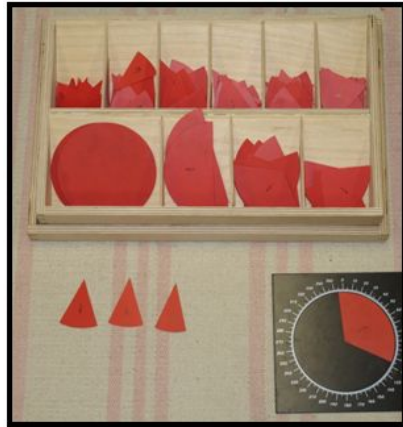
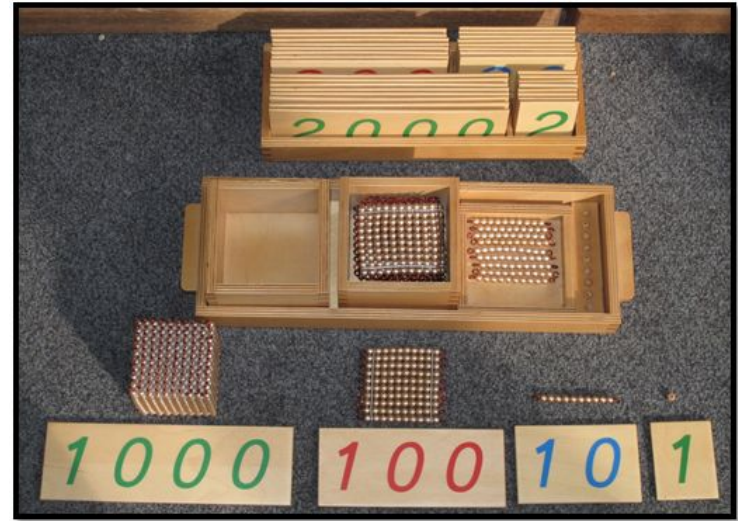
American River Classrooms

Grade Level	Program Level	Number of Classes	Approx. Class Size
TK/K	Early Childhood	4	24
1/2/3	6-9 - Lower Elementary	7	24
4/5/6	9-12 - Upper Elementary	6	24
7/8	Secondary I - Middle School	3	20

Components of the Montessori Classroom

- ❑ Multi-age classroom
- ❑ Emphasis on self-control and self-discipline
- ❑ Freedom to move around the classroom
- ❑ Individual and small group lessons
- ❑ Progress at individual rate
- ❑ Emphasis on independence, individuality, and learning
- ❑ Use of materials and manipulatives
- ❑ Peer tutoring
- ❑ Child-centered schedule
- ❑ Peace education

Montessori Materials



Club Montessori

- ❑ Before and After School Childcare Program
 - ❑ 7:00–8:30 pm Before School
 - ❑ 2:00–3:00 pm Kindie Supplement Program
 - ❑ 3:00–6:00 pm After School
 - ❑ All families are required to pay a non-refundable registration fee upfront. Payments are due on the first of each month; discount available for paying year in full, in advance.
 - ❑ Intersessions
 - ❑ Thanksgiving
 - ❑ Winter Break
 - ❑ Summer
- ★ Network closures – three weeks a year

For Club M questions: Ms. Natalie at nmartinez@cacmp.org

Our Teachers and Staff

- ❑ Classroom Lead Teachers are Dual-certified
 - ❑ California Teaching Credential
 - ❑ Montessori Teaching Certificate
- ❑ Teaching Assistants
- ❑ School Counselor
- ❑ Intervention Staff
 - ❑ Reading
- ❑ Librarian
- ❑ PE Teacher
- ❑ VAPA Teacher

Curriculum

- ☐ Montessori Curriculum (Language, Mathematics, Geometry, Cultural Subjects)
- ☐ iReady Math and Reading
- ☐ Second Step Program
- ☐ Handwriting Without Tears (K- 6th grade)
- ☐ Keyboarding Without Tears (1st - 3rd grade)
- ☐ Instructional Level Spelling Program (1st - 6th grade)
- ☐ Teacher's Curriculum Institute (TCI): Social Studies Alive! California Promise (4th-6th grade)
- ☐ Teacher's Curriculum Institute (TCI): Social Studies Alive! America's Past (4th-6th grade)
- ☐ Teacher's Curriculum Institute (TCI): History Alive! Ancient World (4th-6th grade)
- ☐ Teacher's Curriculum Institute (TCI): Science Ecosystems (7th-8th grade)
- ☐ Teacher's Curriculum Institute (TCI): Science Cells and Genetics (7th-8th grade)
- ☐ Teacher's Curriculum INstitute (TCI): History Alive! The United States Through Industrialism (7th-8th grade)
- ☐ Teacher's Curriculum Institute (TCI): History Alive! The Medieval World and Beyond (7th-8th grade)
- ☐ Ready Math* (7th-8th grade)

Technology at CMP

- ❑ All students 3rd-8th have an assigned Chromebook
- ❑ All TK/K and Lower Elementary Classes have Smart TVs
- ❑ All Upper Elementary and Middle School Classes have Smart Boards

Wanted and Needed: Parent Involvement

40 Hours for your first child enrolled and 70 hours for two or more children enrolled

- ☐ Requirements

- ☐ Live Scan Clearance (1 time)
- ☐ TB Test (4 years)
- ☐ 7 Habits of Highly Effective Volunteers
- ☐ Negative COVID test with 24 hours of Volunteering (each time)

- ☐ Additional Requirements for Driving

- ☐ Copy of DL (valid)
- ☐ Copy of Vehicle Registration (yearly)
- ☐ Copy of Car Insurance - \$100,000 each person/\$300,000 each accident (valid)
- ☐ DMV Driving Record - Form K4 (be sure to turn in within 30 days of report) (yearly)

Parent Involvement: Opportunities

- ❑ Campus Advisory Council (CAC)
- ❑ Principal's Cafe
- ❑ Field Trips - organizing, chaperoning, driving
- ❑ Classroom - reading, spelling, laminating, photocopying, washing job rugs, etc.
- ❑ Watching a Class Pet (typically over the breaks)
- ❑ Parent/Teacher Conferences
- ❑ Campus Events

Field Trips

- ❑ Important part of the curriculum
- ❑ Tk-3rd: attend approximately 3-5 field trips per year
- ❑ 4th-6th: attend approximately 4-7 field trips per year, as well as an end of the year Milestone trip
- ❑ Middle School: Immersion trips between each 6 week cycle (6-8 field trips per year)
- ❑ Parent participation critical for success as drivers and volunteers
- ❑ Contributions toward field trips to offset costs

Campus Events

- ❑ Meet and Greet (before school starts)
- ❑ Back to School Nights
- ❑ Peace Walk
- ❑ Harvest Festival
- ❑ Classroom Harvest Feasts
- ❑ Spelling Bee
- ❑ Classroom Performances
- ❑ Variety Show
- ❑ Art Walk
- ❑ Family Dine Out Nights
- ❑ Scholastic Book Fair
- ❑ Field Day
- ❑ Cardboard Challenge
- ❑ Cultural Fair
- ❑ Science Fair
- ❑ Read a Thon
- ❑ APEX Fundraiser Event

Events



Lottery Application Process

- ❑ Go to School Mint and create an account (can find it under the Enrollment and Lottery tab on our cacmp.org website).
- ❑ If your child has at least 1 school year of previous Montessori experience, please have the Director/Principal complete the Montessori Verification Form (can be found under the Enrollment and Lottery tab on the cacmp.org website).
- ❑ Families are able to login to their School Mint account at any time to check the status of their child's waitlist spot.
- ❑ Families have 72 hours to accept or decline a placement.
- ❑ Once families have accepted a placement, they receive a message from School Mint to begin registration paperwork..
- ❑ Application questions - Ms. Emily - egonzalez@cacmp.org

A Tour In Pictures





















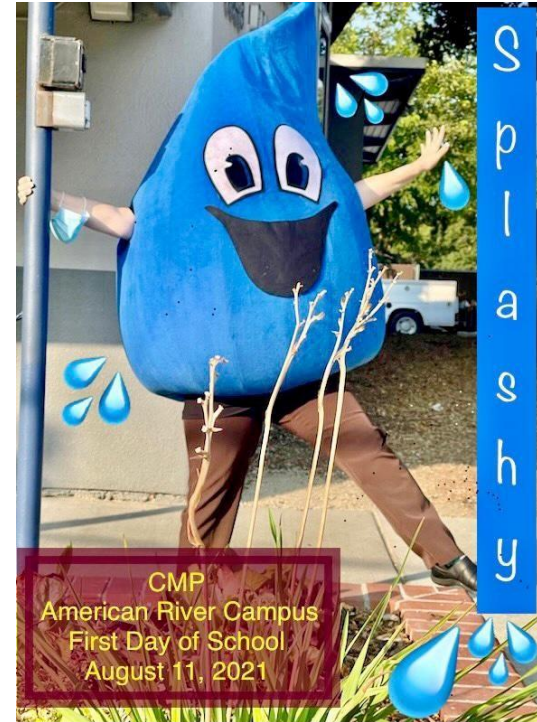






Other Things to Know about CMP-AR

- ❑ Positive Behavior Intervention and Supports
 - ❑ **W**ork together
 - ❑ **A**ct responsibly
 - ❑ **V**alue community
 - ❑ **E**ncourage yourself and others
 - ❑ Splash Tickets & Splashy



**What questions
do you have?**

Thank You for Attending Our Parent Information Tour

